



## Catalog sheet

**STB 003 Self-closing, push-button, concealed shower mixer with mounting box and adjustable water temperature**

**STB 004 Self-closing, push-button, concealed shower mixer with extended mounting box, with adjustable water temperature**

concealed shower mixer with mounting box and adjustable water temperature, Opening time 15-25 s, Water temperature 5-70°C, Flow rate 10 l/min (3 bar), Min. 0.5 bar; Max. 6 bar; recommended 2-4 bar

The faucets have a continuously adjustable flow time of 15-25 seconds, after which the water flow automatically stops, so they do not require any power supply.

This type of battery is highly resistant to mechanical damage and wear. It is mainly used in public areas - such as swimming pools, public baths, campsites, etc.

The faucet uniquely combines a push valve with temperature controller in one element.

For maintenance, we recommend using LARRIN cleaning agent.



### Complete delivery

- Push-button faucet body
- Cover plate
- Mounting box

### Standard versions

- STB 003 Self-closing, push-button, concealed shower mixer with mounting box and adjustable water temperature
- STB 004 Self-closing, push-button, concealed shower mixer with extended mounting box, with adjustable water temperature

### Technical details

- Opening time 15-25 s
- Water temperature 5- 70°C
- Flow rate 10 l/min (3 bar)
- Min. 0.5 bar; Max. 6 bar; recommended 2-4 bar

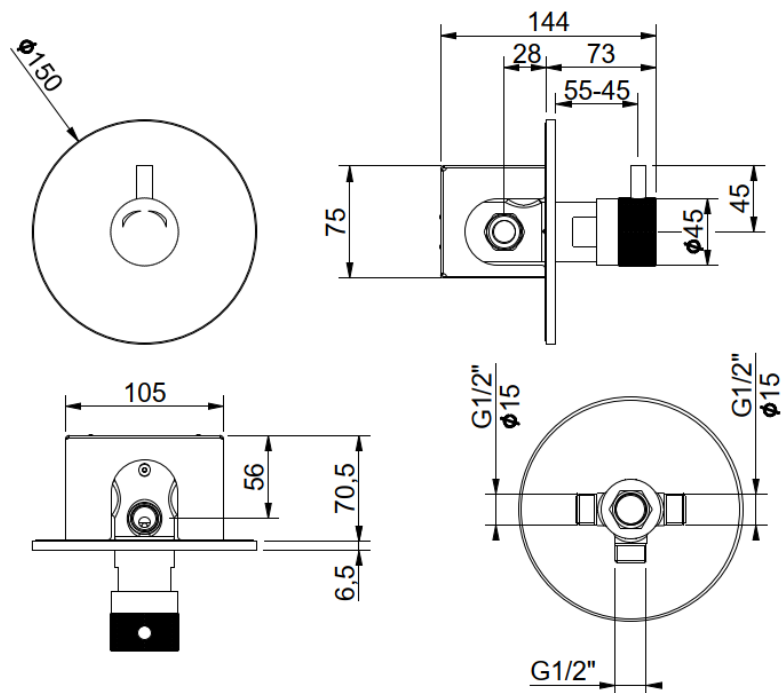
### Construction readiness requirements

- Water inlet G1/2" prepared according to the diagram
- Prepared niche corresponding to the dimensions of the battery



## Diagram

### STB 003



### STB 004

